

# Dell Data Protection | Rapid Recovery

ZeroIMPACT recovery—anything to anywhere

Optimize your users' application experience — and simplify backup and recovery. You need to meet aggressive SLAs for multiple systems and applications — physical, virtual and cloud. When critical business systems fail, you don't have time to cobble together multiple solutions or sort through complex options. You need a single, simple, flexible solution to protect everything, everywhere with zero impact on your users — and make work easier for you in the process.

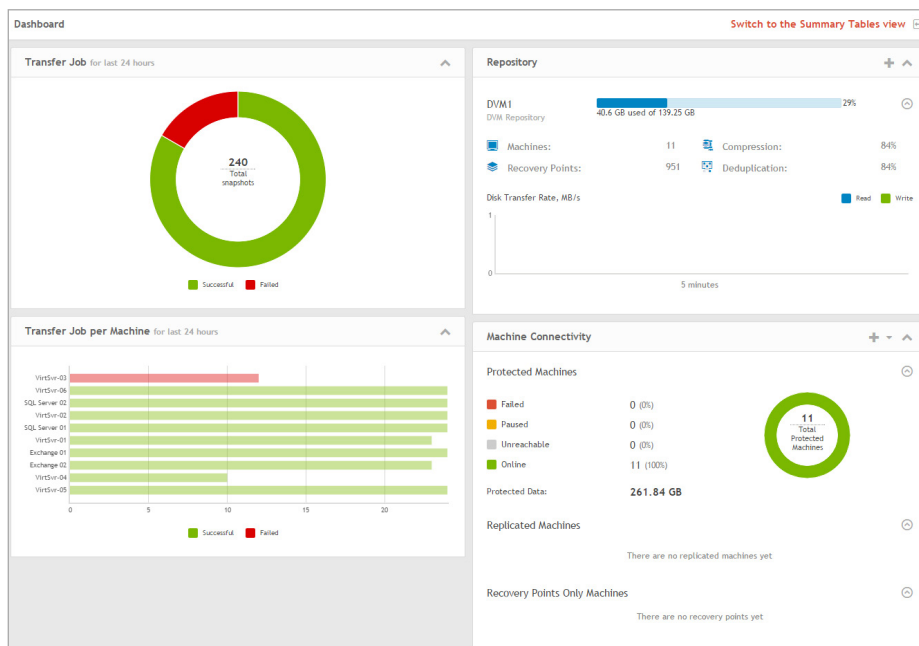
Dell Data Protection | Rapid Recovery lets you protect anything, anywhere — systems, apps and data, whether it's physical, virtual or in the cloud. Run without restore — fast and easily. The next generation of AppAssure software, Rapid Recovery provides you with one reliable, admin-friendly solution which can be deployed as software or in scalable appliance form factor — with all capabilities included.

"Point and click restores? C'mon, man, it doesn't get any better than that!"

*Charles Turcich, System Administrator, Catasys, Inc.*  
Source: [TechValidate](#).

### Benefits:

- Protect anything, anywhere — systems, apps, data, whether it's physical, virtual or in the cloud
- Run without restore, with zero impact on your users
- Recover in <15 minutes — fast and easy
- Protect growing virtual environments automatically



New dashboard gives insights into your data protection. Drag-and-drop customizable with clickable links to action items.

Using Rapid Recovery, you can:

- Recover whole systems, your apps and their data — even terabytes of data — in less than 15 minutes
- Ensure zero impact on your users by presenting them with the data they request instantly, during restores, as if the outage never happened
- Assure system, application and data availability everywhere: physical, virtual and cloud
- Protect growing virtual environments automatically
- Connect to all the leading public clouds simply and easily
- Match data protection to your needs, using agent-based and agentless backup — all in one solution
- Lower costs — all capabilities included in one solution
- Manage and configure your data protection in just a few clicks—simplified processes and one friendly, comprehensive management interface

...all with one simple solution. No shopping around and paying extra to get various capabilities, no juggling multiple solutions and no time wasted learning and using multiple interfaces.

## Features

- **Cloud Archive** — Archive your static data to Microsoft Azure, Amazon S3, Rackspace, or any OpenStack provider. Expand your recovery options by directly mounting archives for simple bare metal restore and file-level restore.
- **Rapid Snap for Applications** — Use incremental-forever snapshots to capture an entire application and its relevant state, up to every 5 minutes, for complete application and system recovery with near-zero RTOs and aggressive RPOs.
- **Rapid Snap for Virtual** — Achieve easy, scalable protection for your growing virtual environment by protecting VMware VMs without disrupting applications and users.
- **Live Recovery** — Restore operations near-instantly with an RTO of minutes.
- **Verified Recovery** — Perform automated recovery testing and verification of backups to ensure the file systems, Microsoft Exchange and SQL Server instances that you back up will be recovered.
- **Universal Recovery** — Restore at any level, from a single file, message, or data object to a complete physical or virtual machine, even to dissimilar hardware.

- **Virtual Standby** — Continually send updates to a virtual machine that can be activated in the event there's an issue with the primary machine.
- **Changed-block tracking** — Track changes at the block level, backing up only the data that has changed, to assure optimal performance.
- **FIPS certification** — The Dell Data Protection | Rapid Recovery Crypto Module certification is 140-2 Level 1.
- **All-inclusive software** — Lower your costs. No extra charges for replication, Virtual Standby, and all the other advanced capabilities.

## About Dell Software

Dell Software helps customers unlock greater potential through the power of technology — delivering scalable, affordable and simple-to-use solutions that simplify IT and mitigate risk. This software, when combined with Dell hardware and services, drives unmatched efficiency and productivity to accelerate business results. [www.dellsoftware.com](http://www.dellsoftware.com).



## Core and Central Management Console Requirements

### Operating system

The Rapid Recovery Core and Central Management Console require one of the following 64-bit Windows operating system (OS). They do not run on 32-bit Windows systems or any Linux distribution.

---

Microsoft Windows 7 SP1, 8, 8.1\*, 10

---

Microsoft Windows Server 2008 R2 SP1, 2012, 2012 R2\* (except Core editions)

---

**Note:** Windows operating systems require the .NET Framework 4.5.2 to be installed to run the Rapid Recovery Core service. Additionally, any OS marked with \* requires the ASP .NET 4.5x role/feature. When installing or upgrading the Core, the installer checks for these components based on the OS of the Core server, and installs or activates them automatically if required.

### Memory

8GB RAM or more

### Processor

Quad-core or higher

### Storage

Direct attached storage, storage area network or network attached storage

### Network

1 gigabit Ethernet (GbE) minimum

## Agent Software Requirements

### Operating system

The Rapid Recovery Agent software supports 32-bit and 64-bit Windows and Linux operating systems including the following:

---

Microsoft Windows Vista SP2

---

Microsoft Windows 7 SP1

---

Microsoft Windows 8, 8.1\*

---

Microsoft Windows 10

---

Microsoft Windows Server 2008 SP2, 2008 R2 SP1) (all editions except Windows Server 2008 Core)

---

Microsoft Windows Server 2012, 2012 R2\*

---

Red Hat Enterprise Linux (RHEL) 6.3, 6.4, 6.5, 6.6, 6.7, 7.0, 7.1

---

CentOS Linux 6.3, 6.4, 6.5, 6.6, 6.7, 7.0, 7.1

---

Oracle Linux 6.3, 6.4, 6.5, 6.6, 6.7, 7.0, 7.1

---

Ubuntu Linux 12.04 LTS, 12.10, 13.04, 13.10, 14.04, 14.10, LTS, 15.04, 15.10

---

SUSE Linux Enterprise Server (SLES) 11 (SP2 and later), 12

---

**Note:** Windows operating systems require Microsoft .NET framework version 4.5.2 to run the Rapid Recovery Agent service. \*OS marked with \* above also require the ASP .NET 4.5.x role/feature which is installed automatically if required

---

**Note:** VMware ESXi environments are compatible with some operating systems that Dell does not support. While you can add these VMs to protection, Dell only supports the operating systems in this list. Protect machines with other operating systems at your own risk.

### Hypervisor support (Export and Virtual Standby)

VMware: Workstation 7.0, 8.0, 9.0, 10, 11, vSphere/ESX(i) 4.0, 4.1, 5.0, 5.1, 5.5, 6.0

---

Microsoft Hyper-V: Microsoft Windows 8, 8.1, 10, and Microsoft Server 2008 SP2, 2008 R2 SP1, 2012, 2012 R2

---

Oracle VirtualBox 4.2.18 and higher

---

For a complete list, please refer to the release notes.

